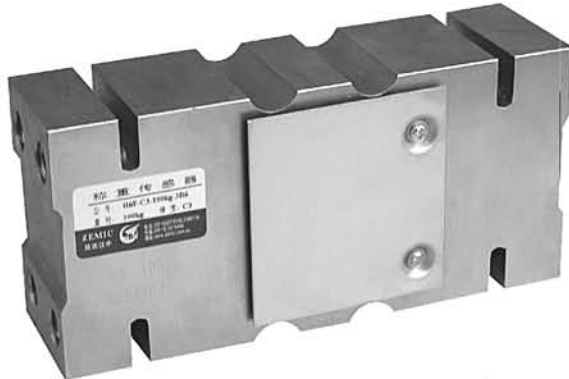




## H6F

Visit [www.load-cell.co.za](http://www.load-cell.co.za) • T +27 (0)12 386 3065 • E: [loadcells@richterscale.co.za](mailto:loadcells@richterscale.co.za)



- H6F load cells are available in the capacities 50kg~2000kg.
- Alloy steel construction, potted by adhesive inside, oil proof, waterproof, anti-corrosive gas and medium making it suitable for all kinds of environments.
- Single point with parallel beam, suitable for electronic scales, platform scales, belt scales and other electronic weighing devices.
- Max. platform size:  
50kg~200kg 400×400mm  
250kg~500kg 600×800mm  
750kg~2000kg 1200×1200mm

### Features

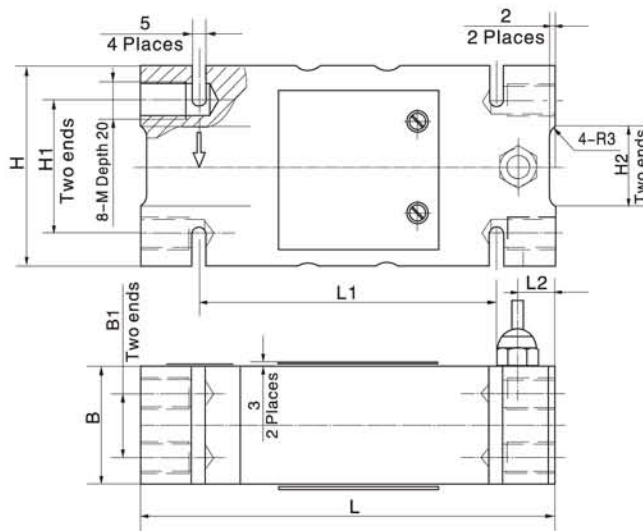
- Capacity: 50kg~2000kg
- High accuracy
- Alloy steel construction
- Low profile and easy installation

### Specifications

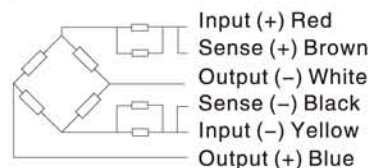
Capacity	kg	50/100/150/200/250/300/400/500/750/1000/1500/2000	
Accuracy		C2	C3
Maximum number of verification intervals	$n_{max}$	2000	3000
Minimum load cell verification interval	$v_{min}$	$E_{max}/5000$	$E_{max}/10000$
Combined error	(%FS)	$\leq \pm 0.030$	$\leq \pm 0.020$
Creep	(%FS/30min)	$\leq \pm 0.024$	$\leq \pm 0.016$
Temperature effect on sensitivity	(%FS/10°C)	$\leq \pm 0.017$	$\leq \pm 0.011$
Temperature effect on zero	(%FS/10°C)	$\leq \pm 0.023$	$\leq \pm 0.015$
Output sensitivity	(mv/v)	2.0±0.2/2.0±0.002	
Input resistance	(Ω)	384±4/400±20	
Output resistance	(Ω)	351±2.0	
Insulation resistance	(MΩ)	≥5000(50VDC)	
Zero balance	(%FS)	1.5	
Temperature, compensated	(°C)	-10~+40	
Temperature, operating	(°C)	-35~+65	
Excitation, recommended	(V)	5~12(DC)	
Excitation, max	(V)	18(DC)	
Safe overload	(%FS)	150	
Ultimate overload	(%FS)	300	
Corner correction		0.02%load value/100mm	

Note: output sensitivity of S1 type is 2.0±0.002mv/v, input resistance is 400±20

### Outline Dimension mm(inch)



Capacity Dimension	50kg - 200kg	250kg - 500kg	750kg - 2t
B	44(1.73)	60(2.36)	76(2.99)
B1	24(0.94)	36(1.42)	46(1.81)
H	75(2.95)	95(3.74)	125(4.92)
H1	50(1.97)	70(2.76)	95(3.74)
H2	30(1.18)	30(1.18)	65(2.56)
L	156(6.14)	146(5.75)	176(6.93)
L1	112(4.4)	110(4.33)	110(4.33)
L2	14(0.55)	11(0.43)	24(0.94)
M	M12-7H	M12-7H	M16-7H



### Wiring:

Adopt shielded, 6 conductor cable: Φ5mm  
Standard cable length: 3m